

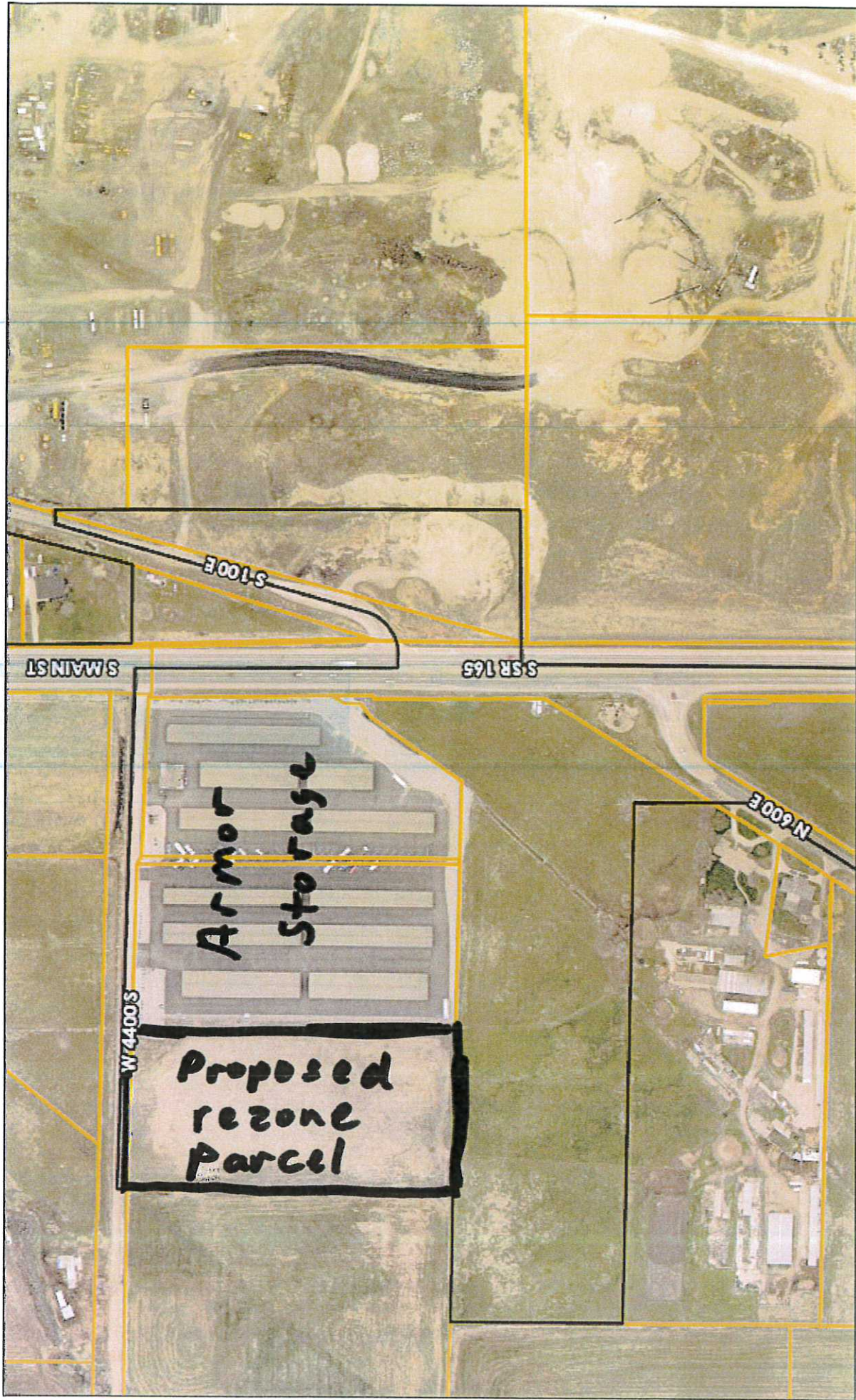
PLANNING COMMISSION MEETING  
SEPTEMBER 12, 2019  
ARMOR STORAGE PROPERTY REZONE  
~800 North 700 East

Armor Storage is requesting to have this 5-acre parcel rezoned from C-1 (Commercial Hwy 165) to M1 (Light Manufacturing). This would allow possible expansion of the existing storage facility in the future. When this property was annexed some expansion of the storage units was expected.

The property to the East is currently zoned M1 and the property to the South is C-1. (This is the Scenic Mountain PUD) The properties to the North & West are agricultural properties outside the city.

Any future development on this property would also need to go thru a site plan approval process.

# Map



8/19/2019, 11:07:19 AM

County Centerline 5.tif  
Municipal Boundaries  
Cache Parcels

|  |                   |  |                     |  |                   |
|--|-------------------|--|---------------------|--|-------------------|
|  | Blue: Band_3      |  | Green: Band_2_3.tif |  | Blue: Band_3      |
|  | Red: Band_1_4.tif |  | Blue: Band_3        |  | Red: Band_1_2.tif |
|  | Green: Band_2_2   |  | Red: Band_1         |  | Green: Band_2     |
|  | Red: Band_2_1     |  | Red: Band_1         |  | Red: Band_1       |

1:3,378  
 0 0.03 0.06 0.11 mi  
 0 0.04 0.09 0.18 km  
 USDA FSA, GeoEye