

**HYRUM CITY ELECTRICAL SUBSTATION  
AND METAL POWER POLES- SITE PLAN  
HAMMER ROAD  
CITY COUNCIL MEETING  
MAY 20, 2010**

**ZONING-** M-2- This zone allows public structures and transmission lines.

**FENCING-** Substation will have an eight foot chain link fence around the perimeter.

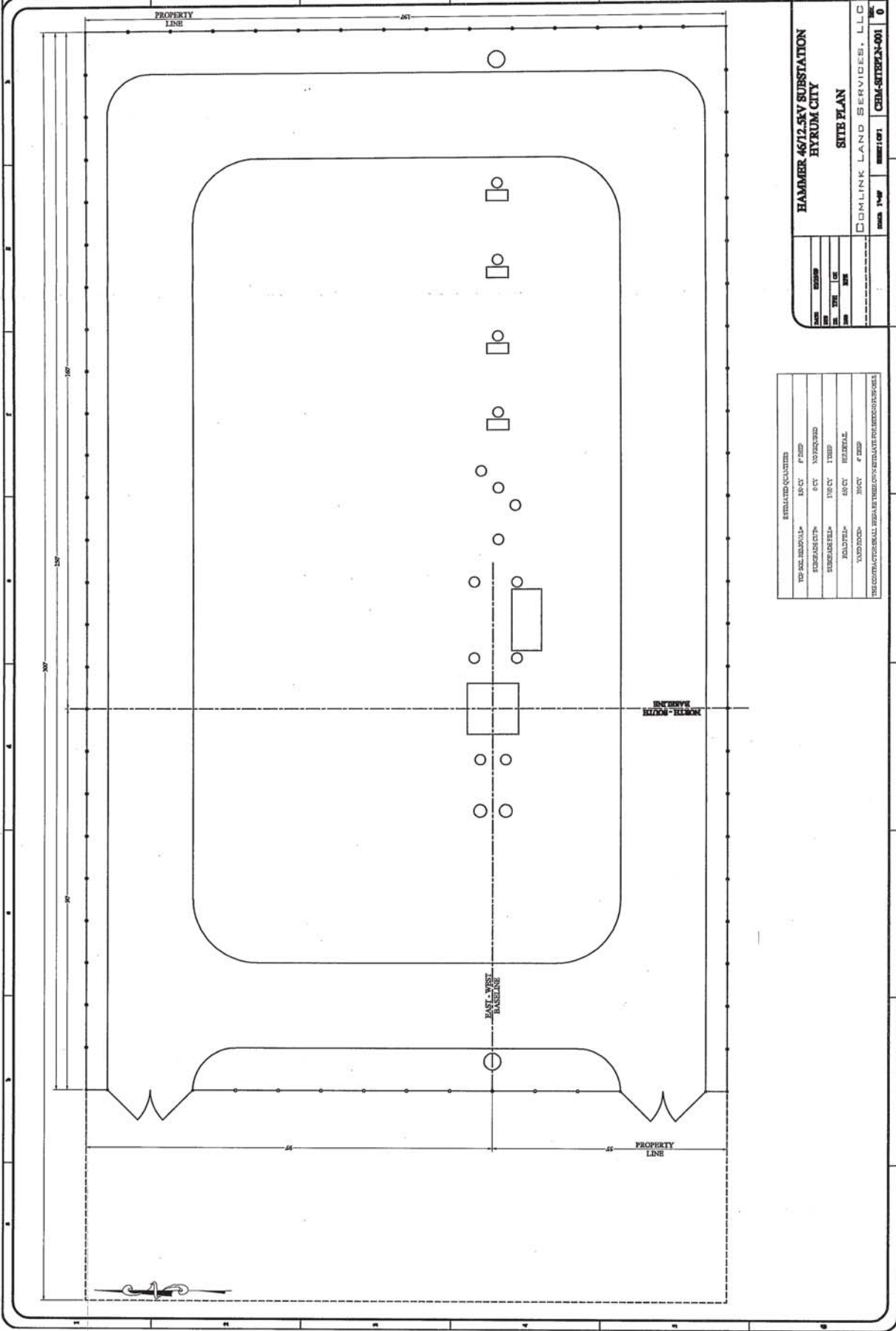
**LANDSCAPPING-** Substation will have a crushed rock layer on the ground.

**LIGHTING-** There will be a yard light at the front and the back of the substation for security. Emergency lighting will be installed at work areas in the substation.

**STORM WATER-** Site should be sufficient as designed to contain run-off.

**NOTES-** The transmission line to this substation will have five metal poles. Two of the metal poles will be by the existing substation on Hwy 101 next to Welch's saw mill & house. Two more metal poles will be by the storm water pond on Hammer Road. One metal pole will be by the new substation on Hammer Road. (See map) The poles will range in height from fifty five to sixty five feet tall. They are of the all weather type metal. The Planning Commission recommends approval of the site plan as proposed.





ESTIMATED QUANTITIES

TOP SOIL REMOVAL*	150 CT	4' DEEP
BASELAYER 60%*	8 CT	NO PROPOSED
BASELAYER 20%*	150 CT	1' DEEP
PAVING*	150 CT	REGULAR
CONCRETE*	150 CT	4' DEEP

THE CONTRACTOR SHALL VERIFY THESE QUANTITIES ESTIMATE FOR ACCURACY BEFORE BIDDING.

**HAMMER 46/12.5KV SUBSTATION**  
**HYRUM CITY**  
**SITES PLAN**  
 COMLINK LAND SERVICES, LLC  
 10/20/11  
 100001071 PM  
 100001071 PM

COMLINK LAND SERVICES, LLC  
 Electric Utility Consultants  
 2001 S. 1000 E.  
 SUITE 100  
 HYRUM, UT 84043  
 PHONE: 435-688-1111  
 FAX: 435-688-1112  
 WWW.COMLINKLANDSERVICES.COM

