

**CITY COUNCIL MEETING
JOHNSON'S READY MIX BATCH PLANT
SITE PLAN
~380 NORTH 1000 EAST
MAY 19, 2016**

ZONING- To be annexed with M-2 Zoning

UTILITIES- Available at existing shop. Short extensions for sewer, water & electric. As per annexation agreement.

PARKING- They will use existing shop area parking to park trucks when not in use.

LANDSCAPPING- Existing landscaped berms.

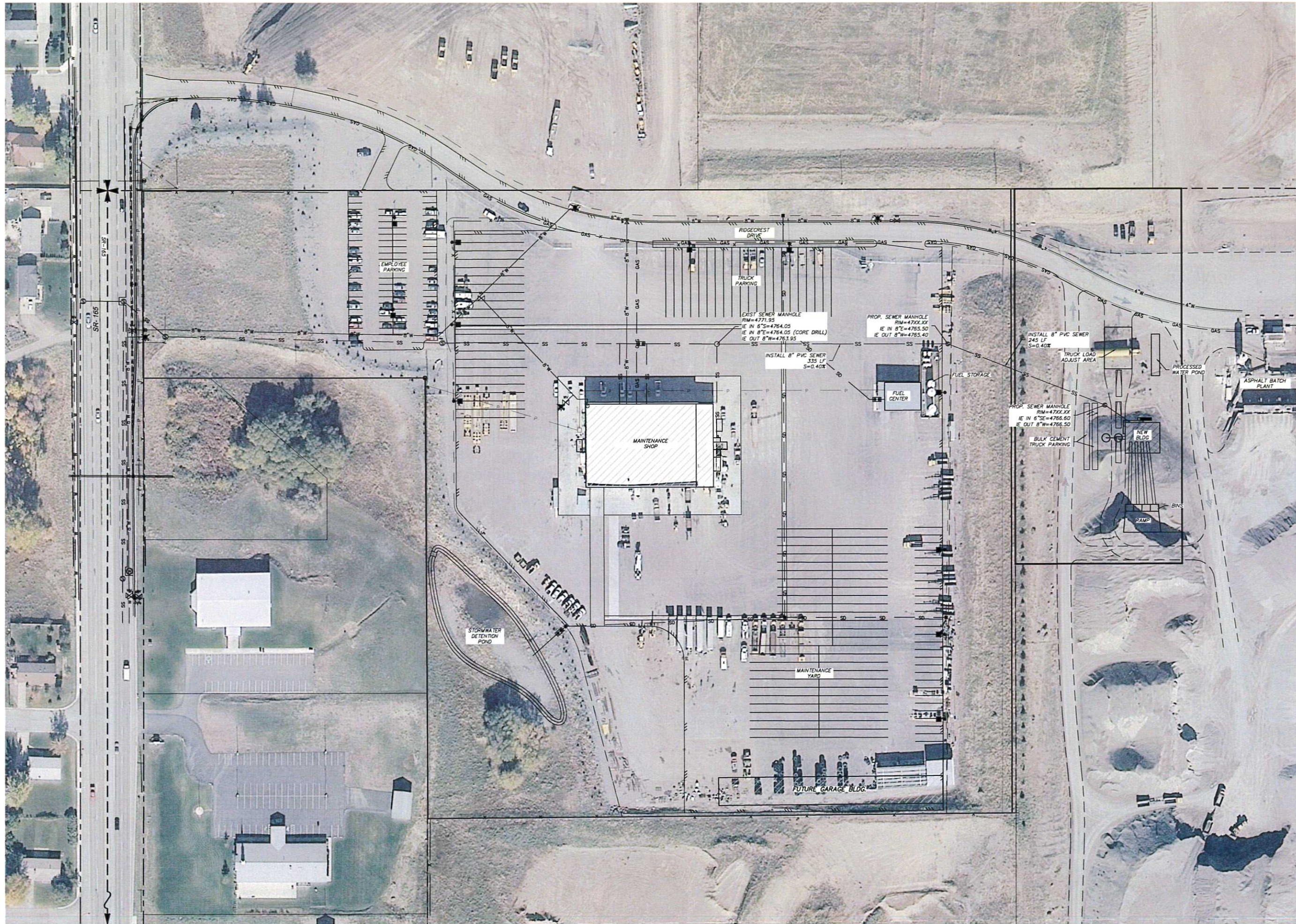
LIGHTING- Lighting on the building.

FIRE OFFICIAL REQUIRMENTS- To be reviewed with the building permit.

STORMWATER- Small pond proposed. They also own all the property around this location that will help handle runoff.

NOTES- The Kilgore Company purchased Johnson's Construction last year. Johnson's currently has a large truck shop in the city just to the West of the proposed new batch plant. They would like to construct a new plant and relocate from their present facility on the south end of Logan. This will bring increased property & sales tax revenue to the city. This property is presently in the county but is in the process of being annexed into Hyrum City. This approval would be based on annexation to the city. The Planning Commission unanimously recommends approval conditioned on annexation and being zoned M-2.

Z:\2016 Projects\500-1603 Hyrum Concrete Plant\ACAD\Civil\500-1601 Civil Base (CURRENT).dwg, 5/12/2016 4:43:20 PM, searl



NO.	DATE	DESCRIPTION

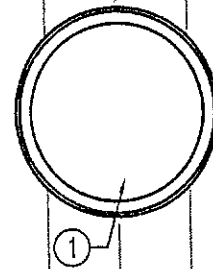
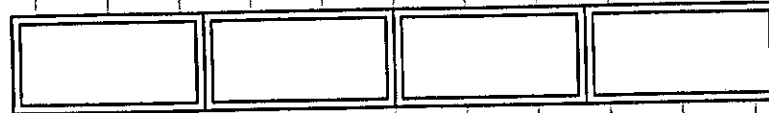
PRELIMINARY SITE PLAN

ALTAVIEW CONCRETE PLANT
 1000 EAST RIDGECREST DR.
 HYRUM, UT 84319

CL
 Cache • Landmark
 Engineers
 Surveyors
 Planners
 1011 West 400 North
 Suite 130
 Logan, UT 84321
 435.713.0099

DATE: 27 APRIL 2016
 SCALE: 1" = 60'
 CALCS BY: S. EARL
 CHECKED BY: XXX
 APPROVED BY: S. EARL
 PROJECT NUMBER: 500-1603
 SHEET:

South Elevation

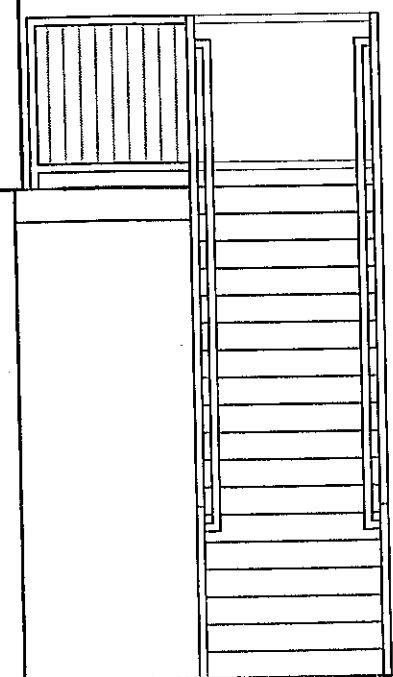
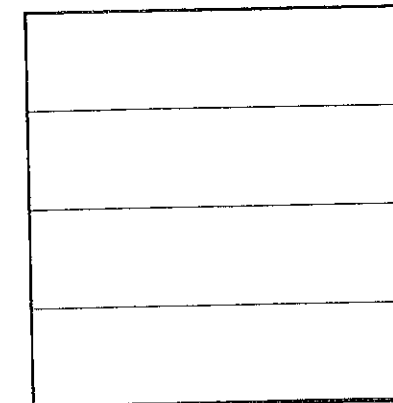
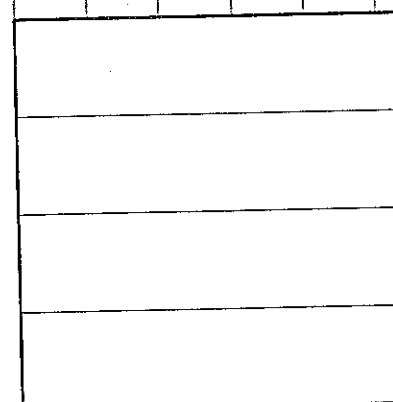
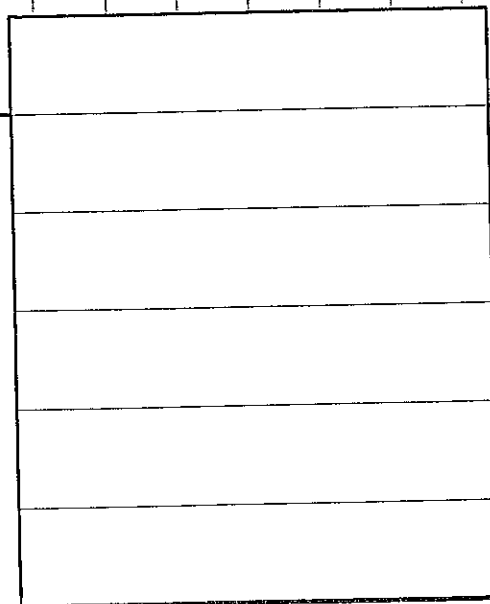
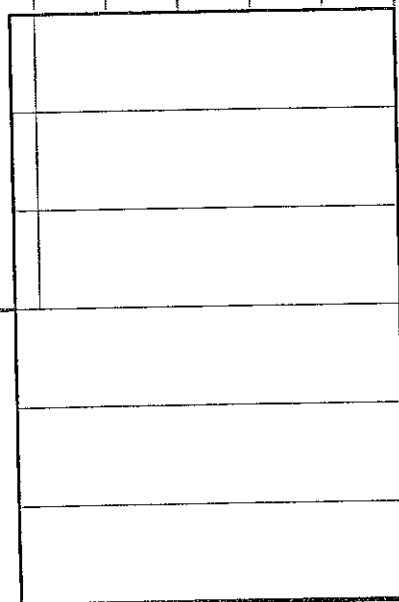


6 | 12

12 | 2.5

120'-0"
TOP OF STEEL

106'-0"
TOP OF FOUNDATION



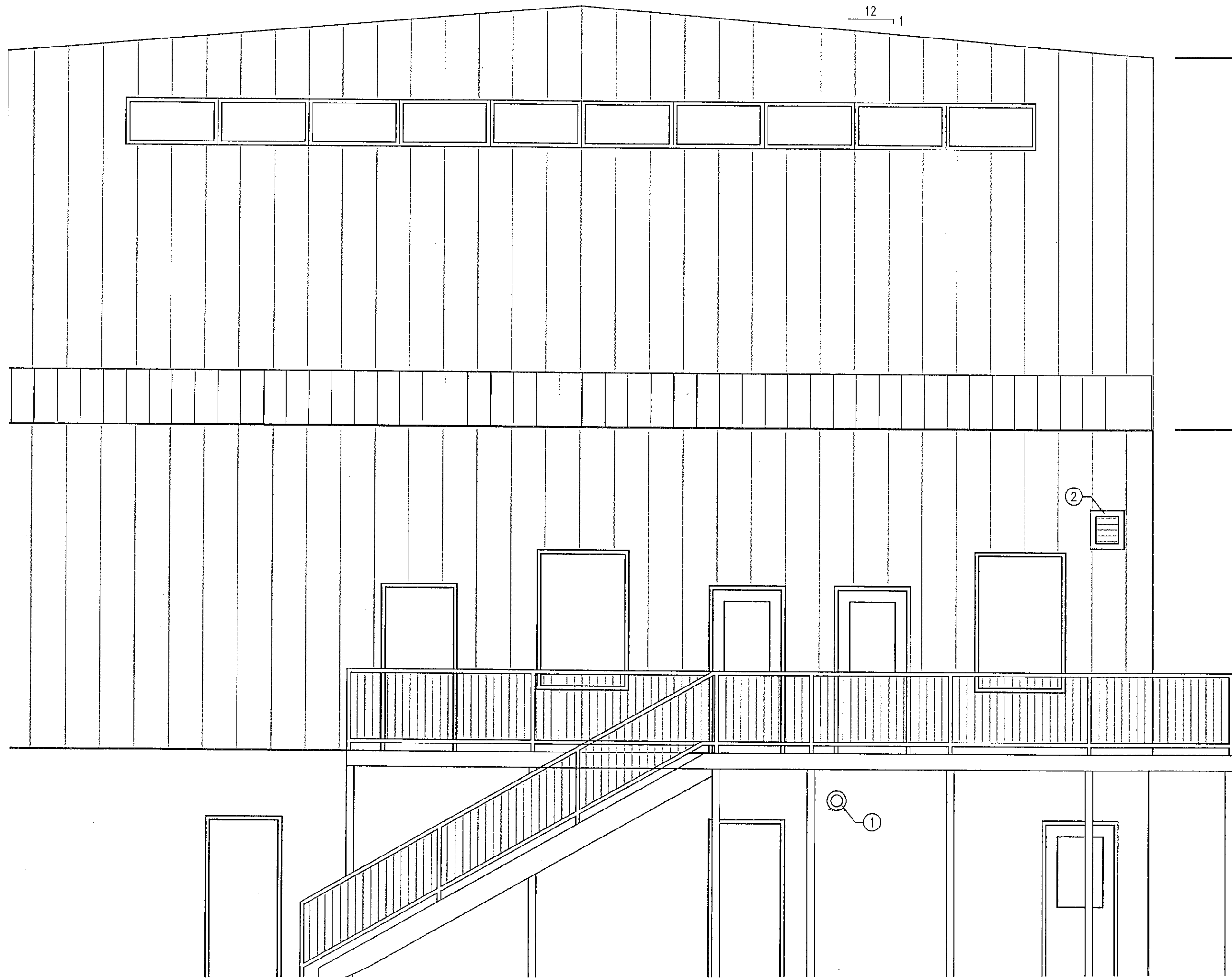
12 1

140'-0"
TOP OF STEEL

East Elevation

124'-0"
TOP OF STEEL

110'-0"
FINISH FLOOR
SECOND LEVEL



140'-0"
TOP OF STEEL

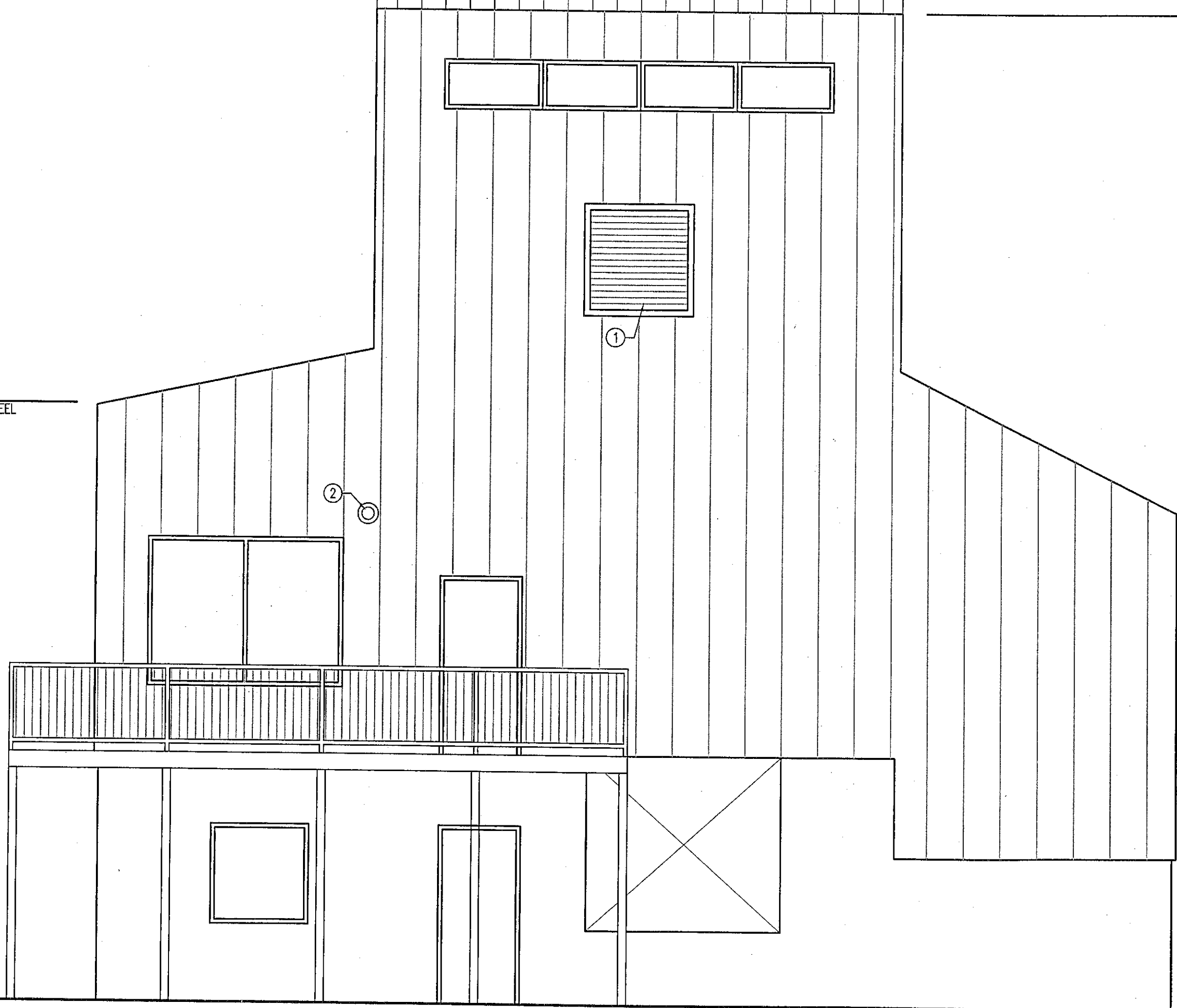
North Elevation

124'-0"
TOP OF STEEL

120'-0"
TOP OF STEEL

110'-0"
FINISH FLOOR
SECOND LEVEL

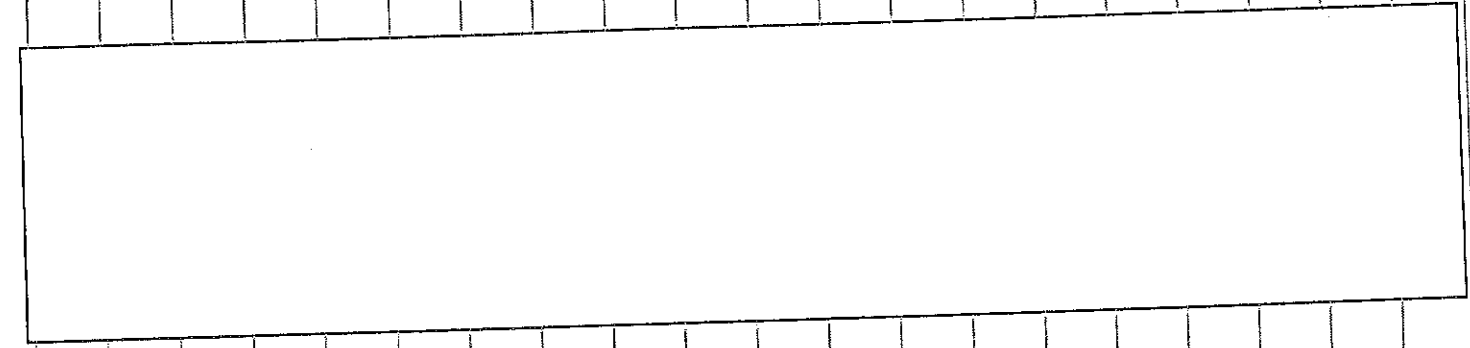
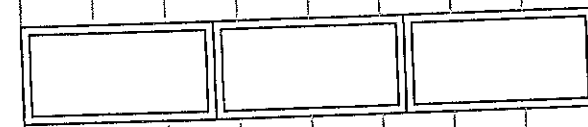
106'-0"
TOP OF FOUNDATION



140'-0"
TOP OF STEEL



West Elevation



124'-0"
TOP OF STEEL



110'-0"
FINISH FLOOR
SECOND LEVEL



106'-0"
TOP OF FOUNDATION



Small rectangular box containing illegible text, likely a title block or revision table.

