

**AMW METAL FABRICATION  
SITE PLAN  
BLACKSMITH FORK INDUSTRIAL PARK  
225 SOUTH 1720 EAST  
CITY COUNCIL MEETING  
NOVEMBER 1, 2018**

ZONING- M-2 Permitted

UTILITIES- Available- Stubbed to site.

PARKING- As shown- 1 space for each employee/shift

FENCING- Privacy fence around the perimeter of property

LANDSCAPPING- As shown

LIGHTING- As shown

FIRE OFFICIAL REQUIRMENTS- To be reviewed with the building permit.

STORMWATER- Existing- This subdivision was designed to handle water from the total area in current storm water pond.

SIGNAGE- As shown on the elevation drawing.

NOTES- They will be doing miscellaneous metal fabrication at this location. They will have 6 to 10 employees. This will be a good addition and start for this portion of the industrial park. The Planning Commission recommends approval as proposed with the following addition: That the 12' area between the building and anvil Road be landscaped. Ryan has moved the parking stalls back by the building and added some landscaping on the corner by the intersection.

# Map



10/1/2018, 9:51:51 AM

5.tif  
County Centerline  
Municipal Boundaries  
Cache Parcels

Blue: Band\_3  
Red: Band\_1 4.tif  
Green: Band\_2  
Red: Band\_1

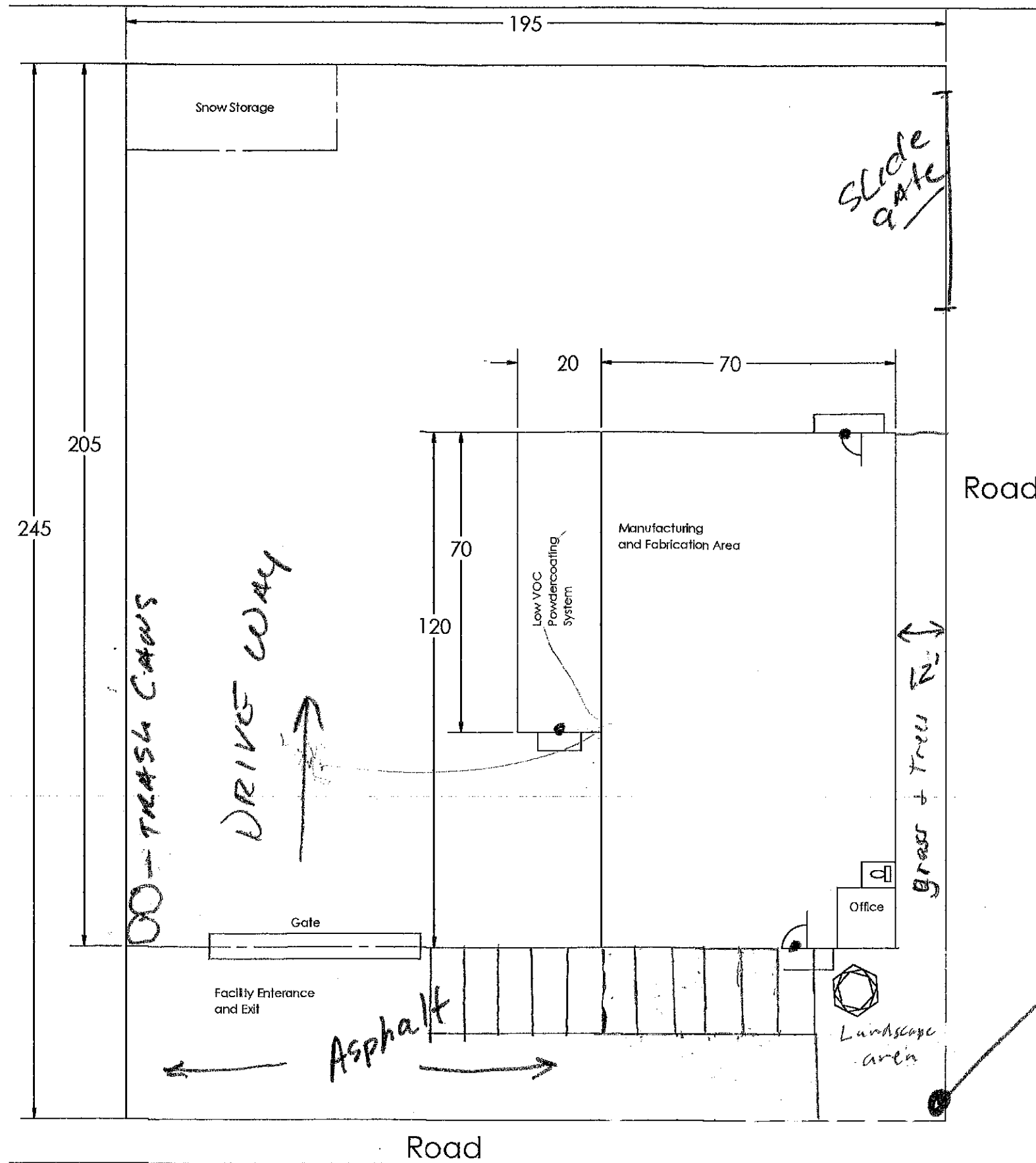
Green: Band\_2 3.tif  
Blue: Band\_3  
Blue: Band\_3

Red: Band\_1 2.tif  
Green: Band\_2  
Red: Band\_1

Blue: Band\_3  
Red: Band\_1

1:6,758  
 0 0.05 0.1 0.2 mi  
 0 0.07 0.15 0.3 km

USDA FSA, GeoEye, CNES/Airbus DS  
 Hyrum City  
 USDA FSA | City and JUB engineering |




# AMW Building Site Plan

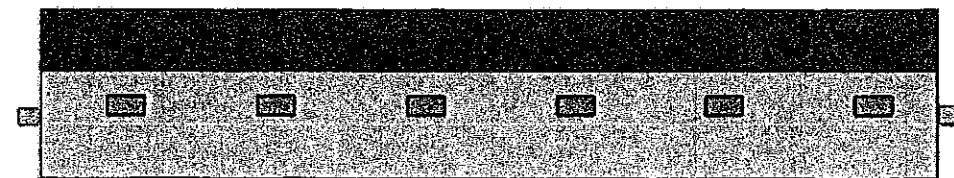
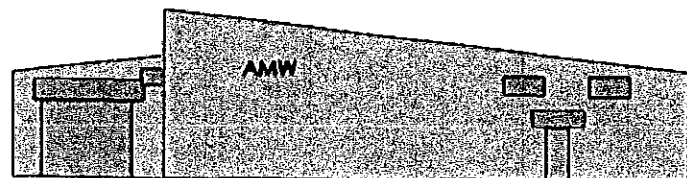
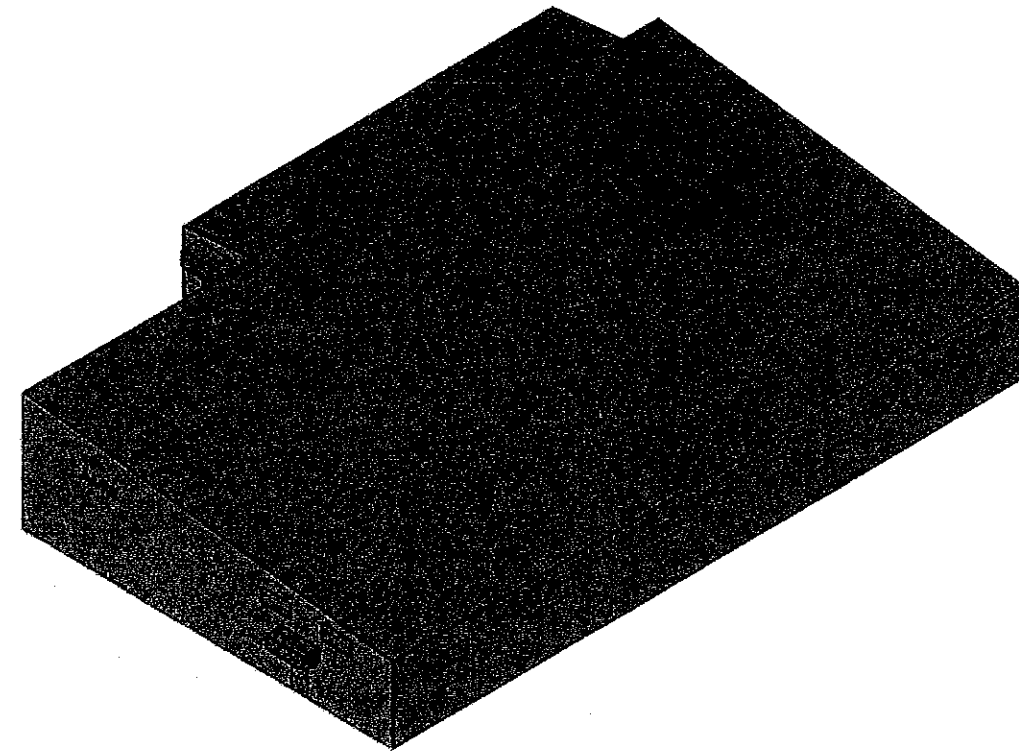
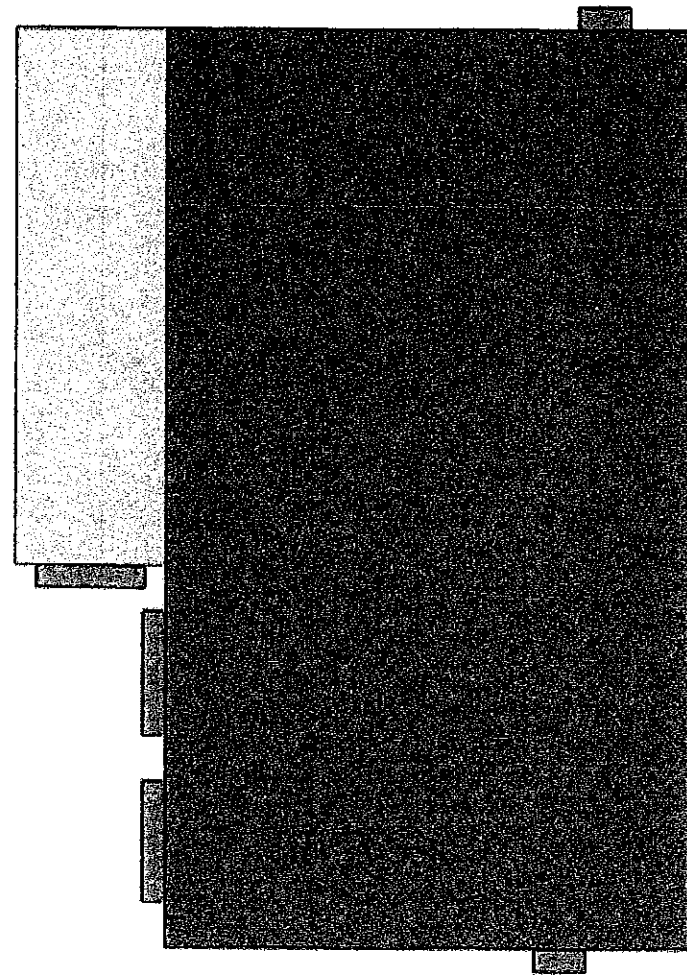
NOTE: photo, Cell Down  
 Directional lights  
 ABOVE DOORS.

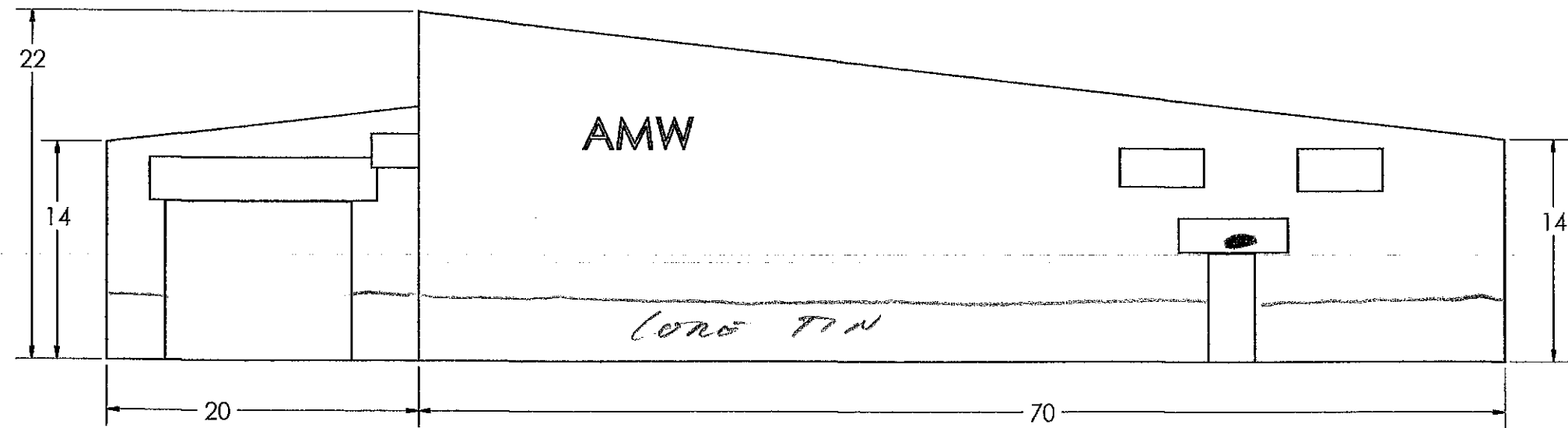
Road

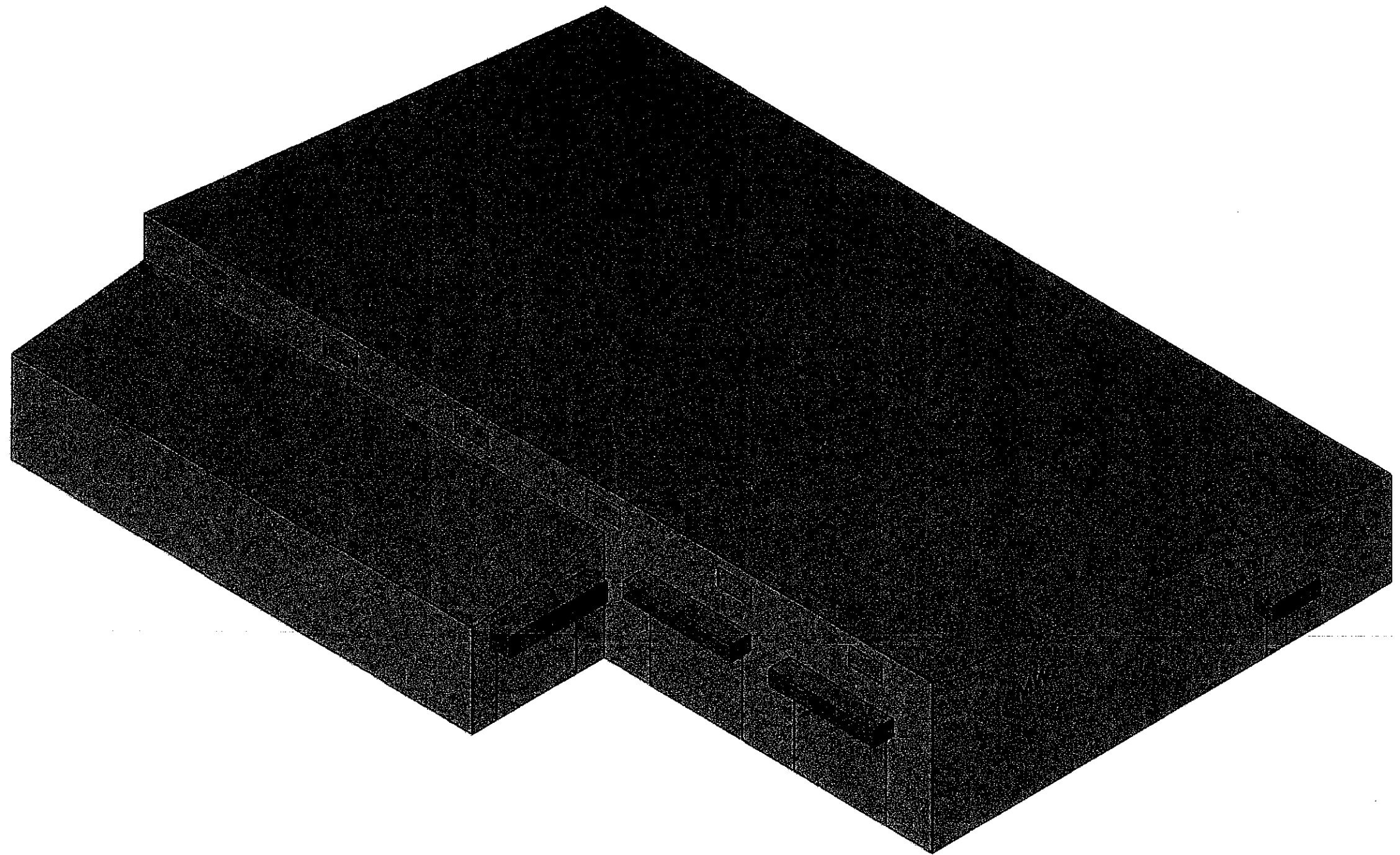
EXISTING STREET LIGHT

Note:  
 Swppp Pond in development

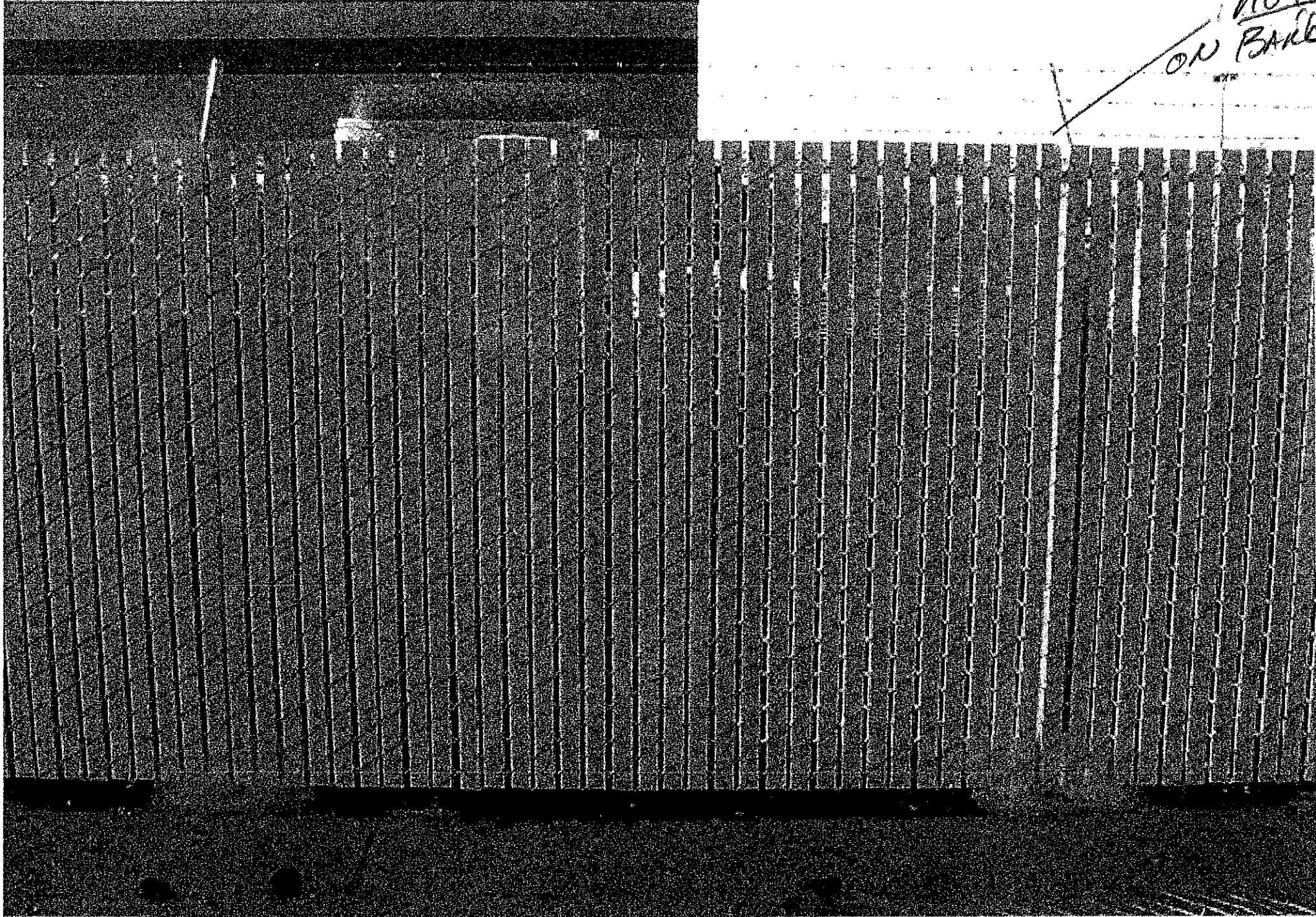
Material Tolerances: X = +/- .06 XX = +/- .03 XXX = +/- .01	Description Drawn By Wade Sept 2018	Artistic Metal 
--	---	---







Privacy Chain Link Perimeter Fence



*NOT planning  
on BARB wire*