

ARMOR STORAGE PROPERTY REZONE
~800 North 700 East
CITY COUNCIL MEETING
SEPTEMBER 19, 2019

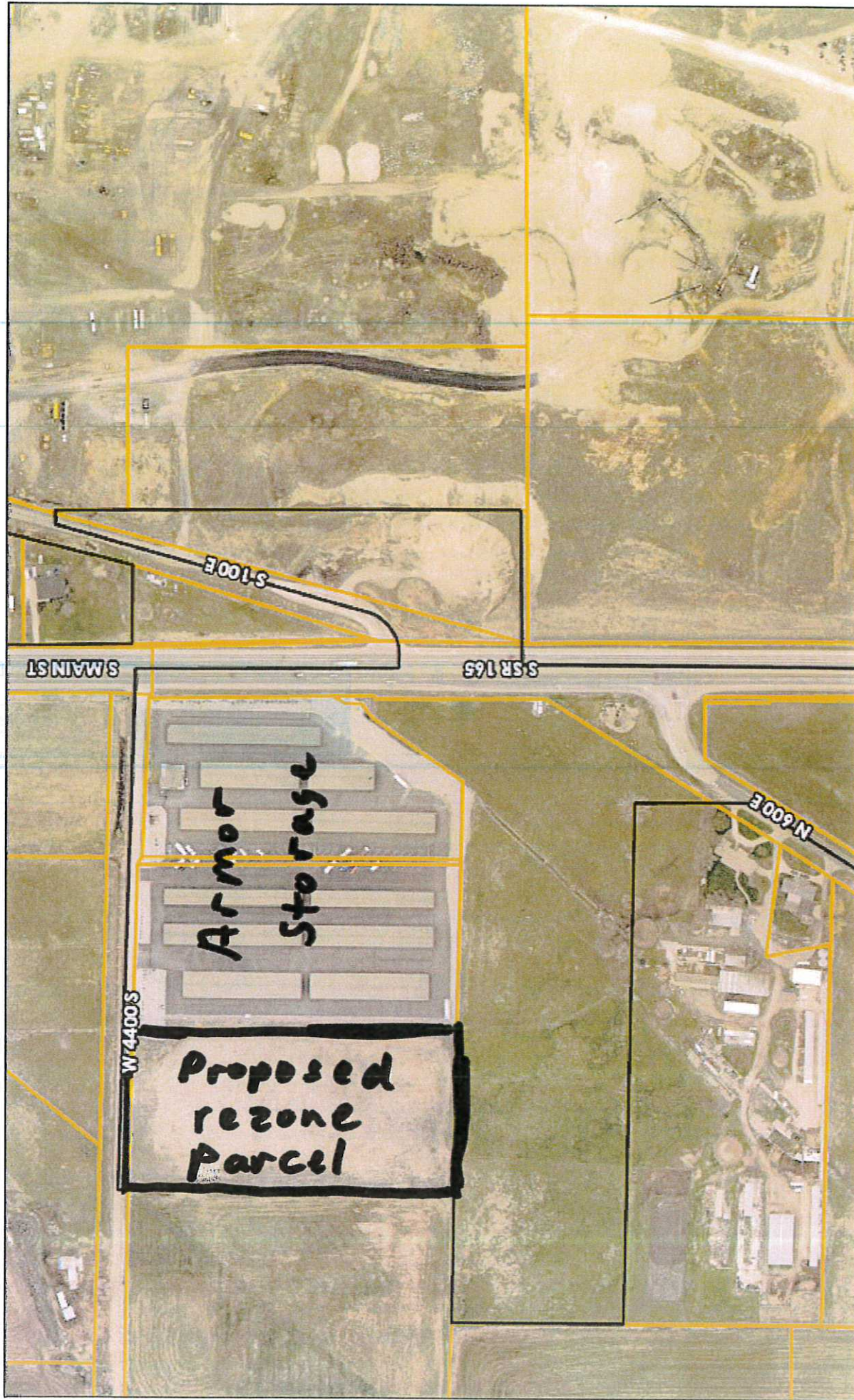
Armor Storage is requesting to have this 5-acre parcel rezoned from C-1 (Commercial Hwy 165) to M1 (Light Manufacturing). This would allow possible expansion of the existing storage facility in the future. When this property was annexed some expansion of the storage units was expected.

The property to the East is currently zoned M1 and the property to the South is C-1. (This is the Scenic Mountain PUD) The properties to the North & West are agricultural properties outside the city.

Any future development on this property would also need to go thru a site plan approval process.

The Planning Commission held a public hearing. No one spoke. The Planning Commission recommends approval.

Map



8/19/2019, 11:07:19 AM

County Centerline	5.tif	Blue: Band_3	Green: Band_2_3.tif	Blue: Band_3	0.03	0.06	0.11 mi
Municipal Boundaries	Red: Band_1_4.tif	Red: Band_1_2.tif	Blue: Band_3	Red: Band_2_2	0.04	0.09	0.18 km
Cache Parcels	Green: Band_2	Green: Band_2	Red: Band_1	Red: Band_1	0	0	

USDA FSA, GeoEye